

# SESION CLINICOPATOLOGICA

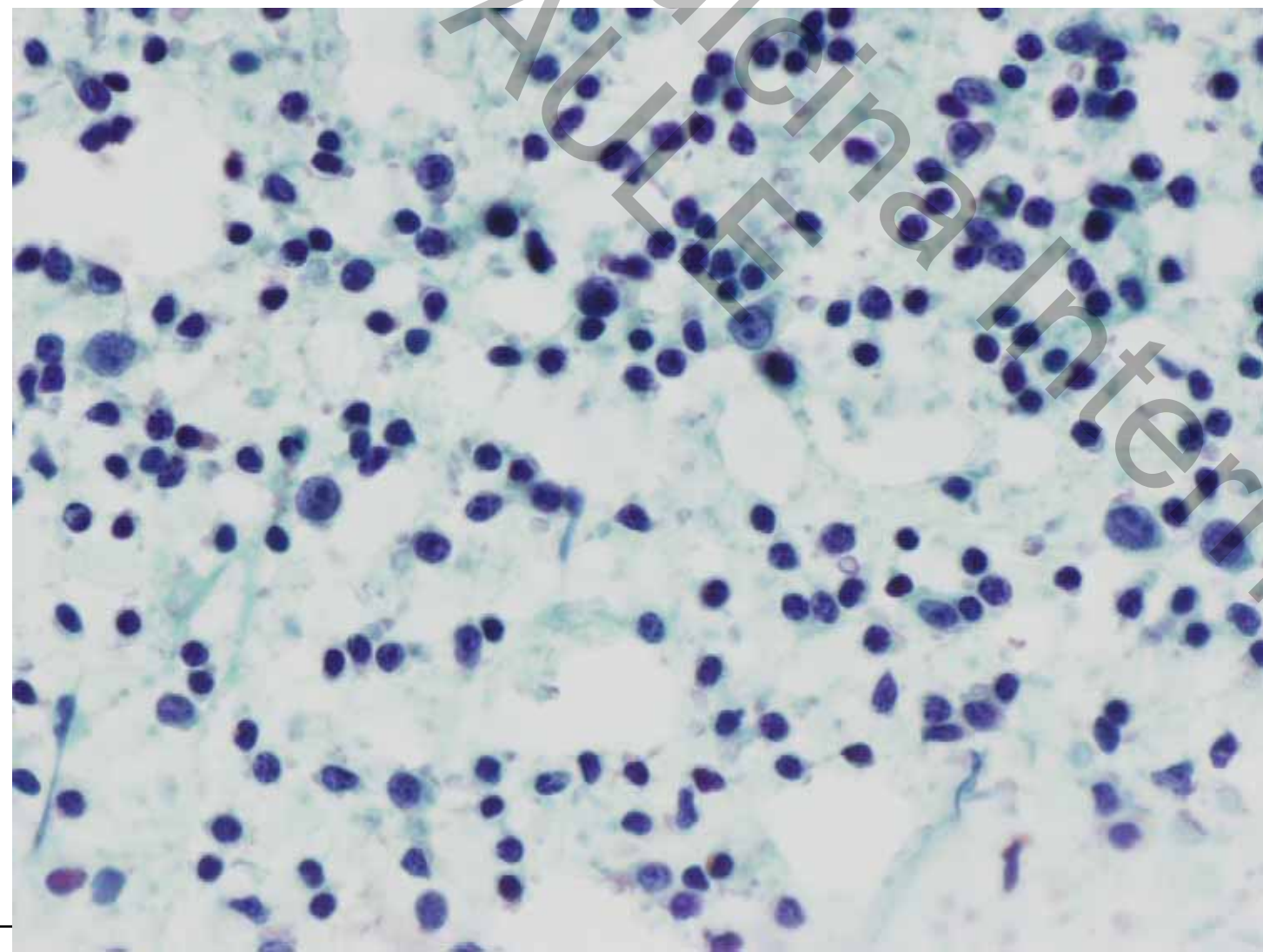
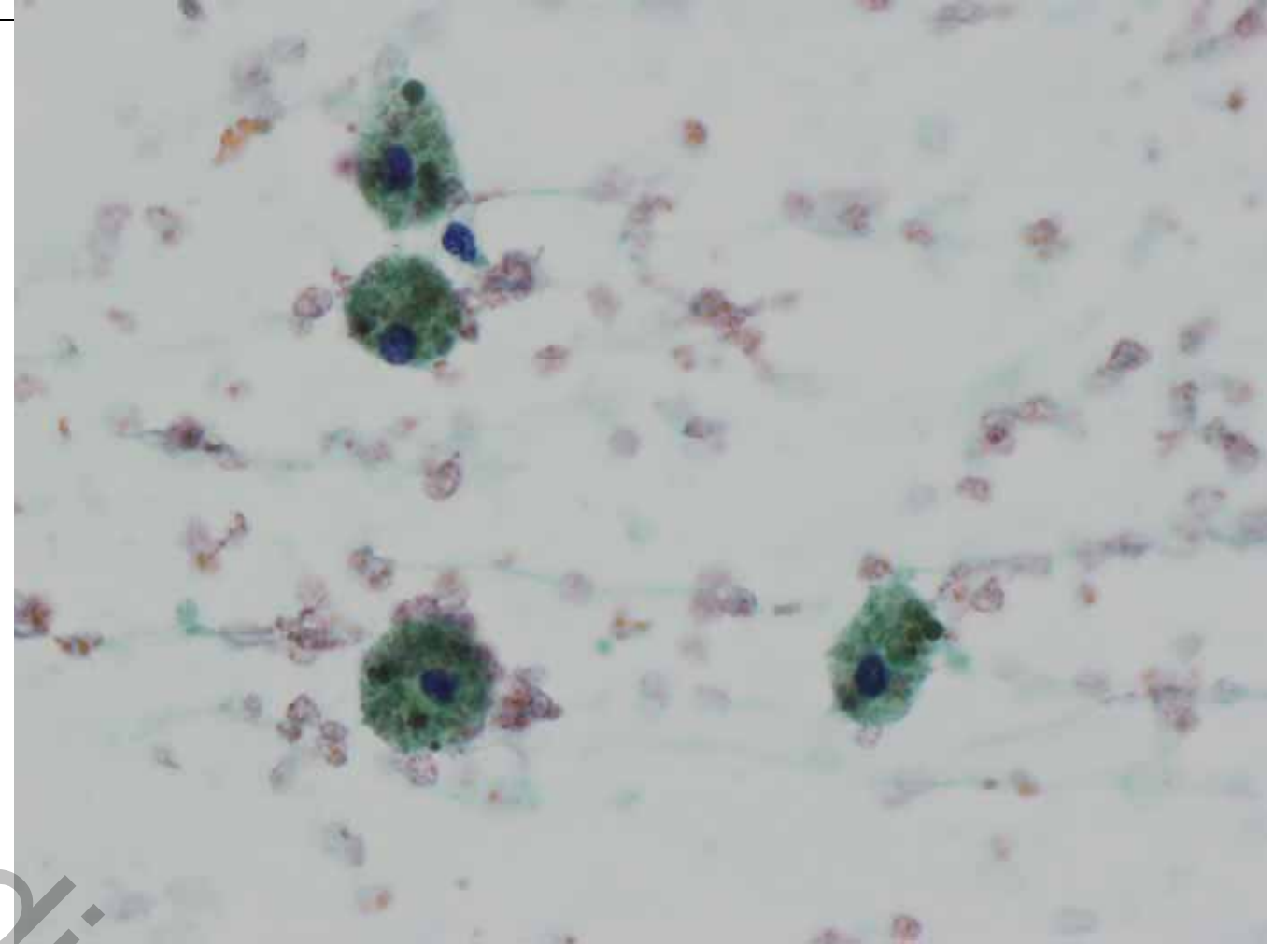
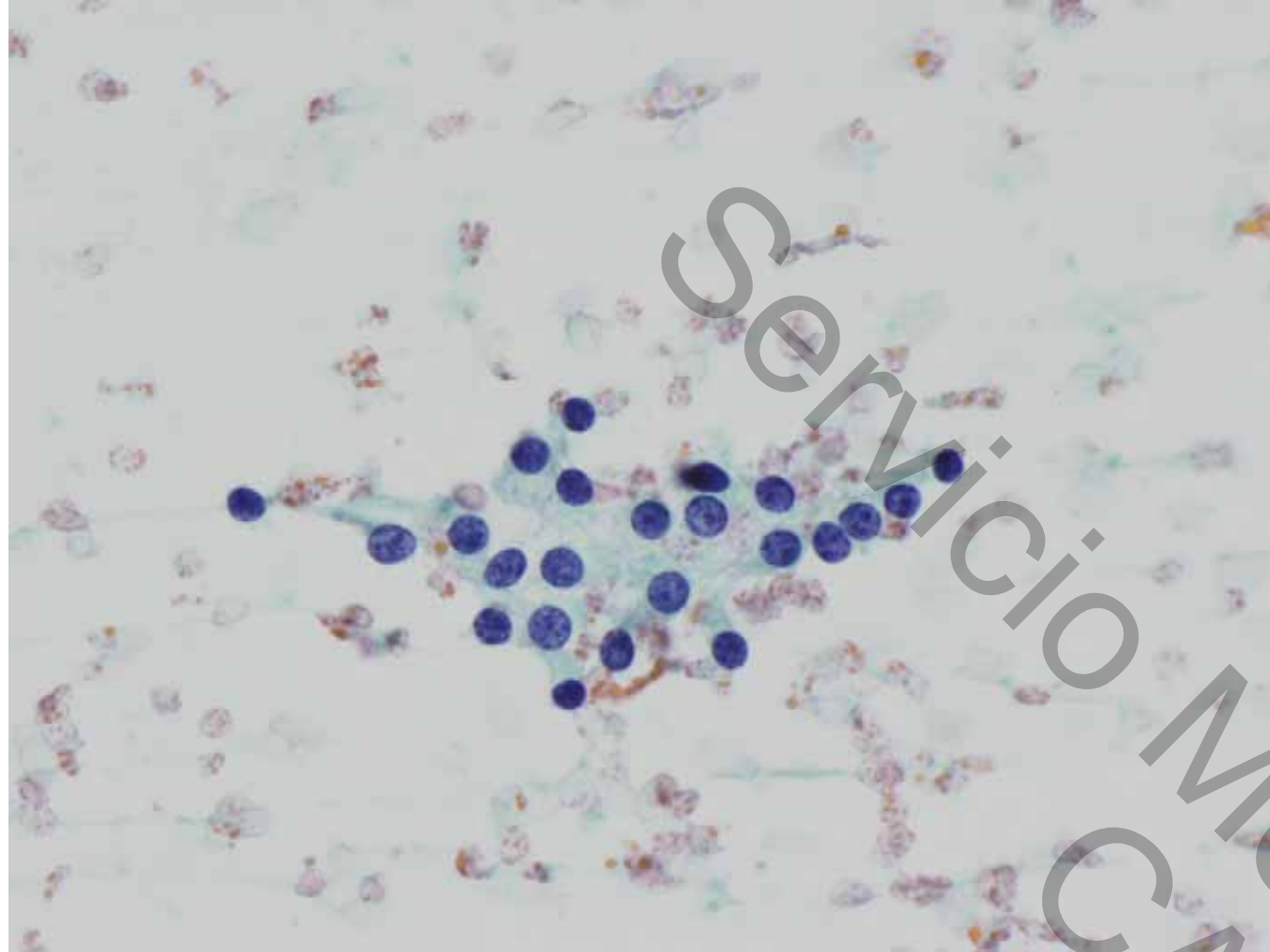
**Agrandamiento tiroideo con nódulo cervical**

**Medicina Interna**

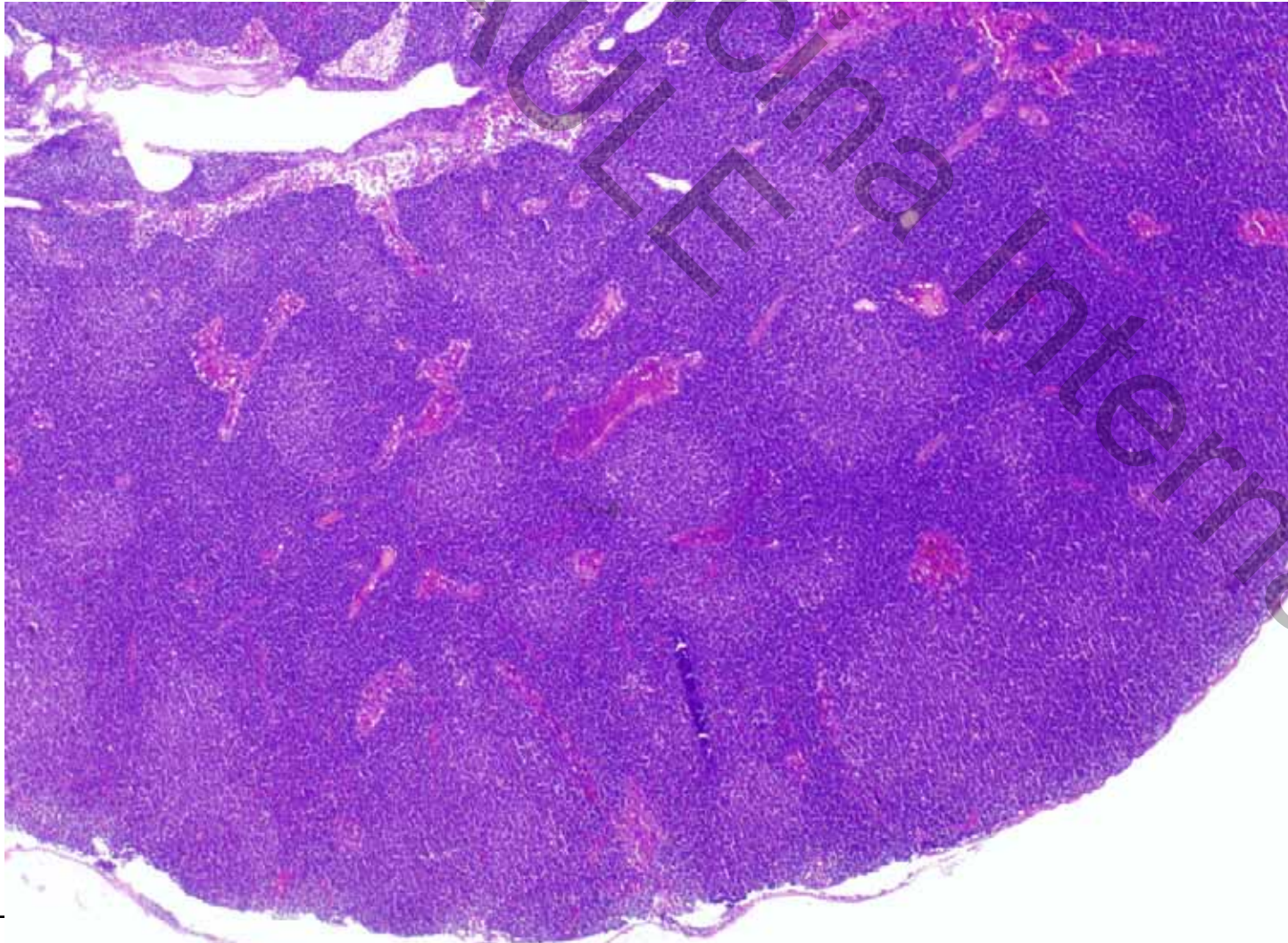
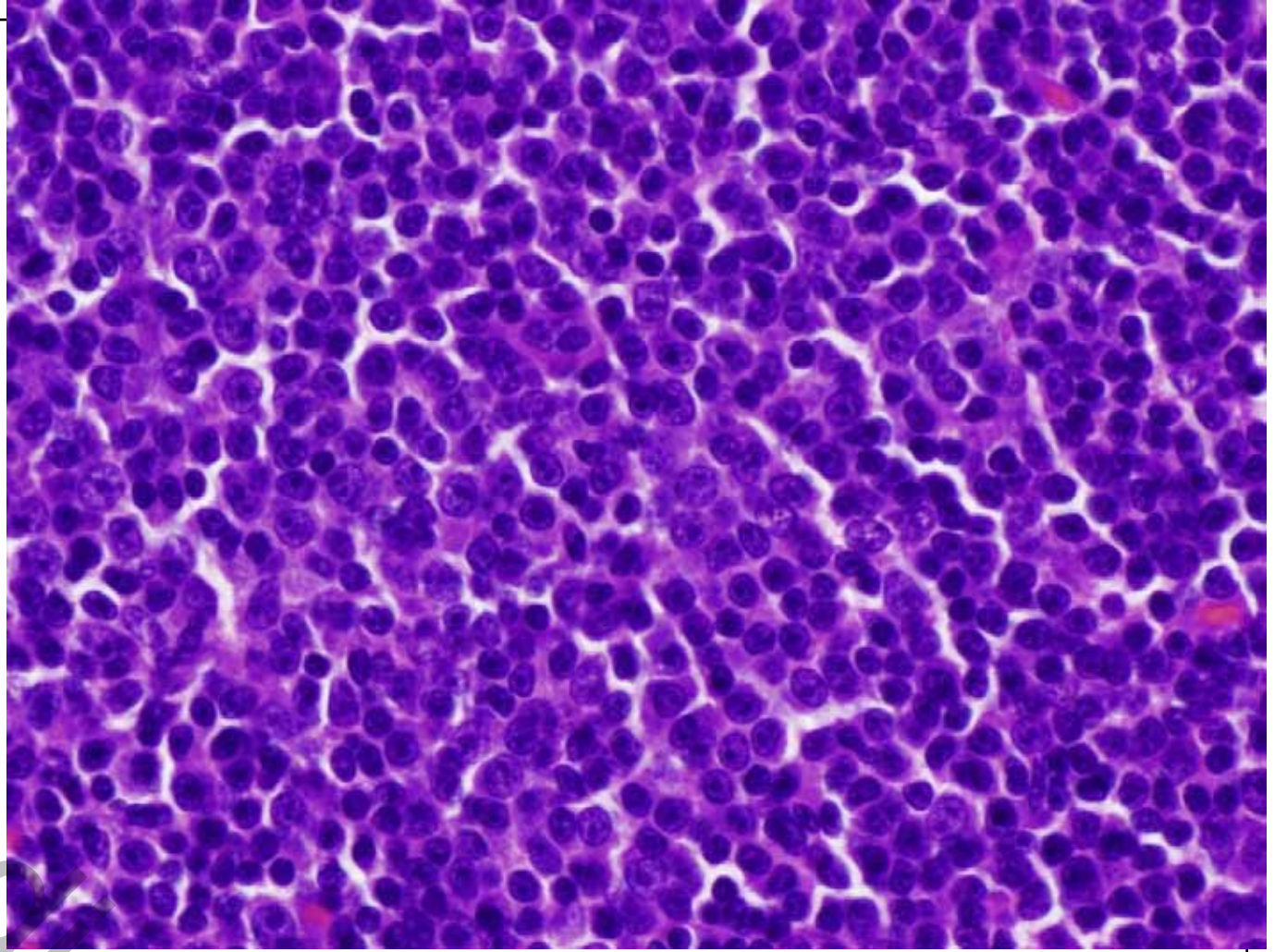
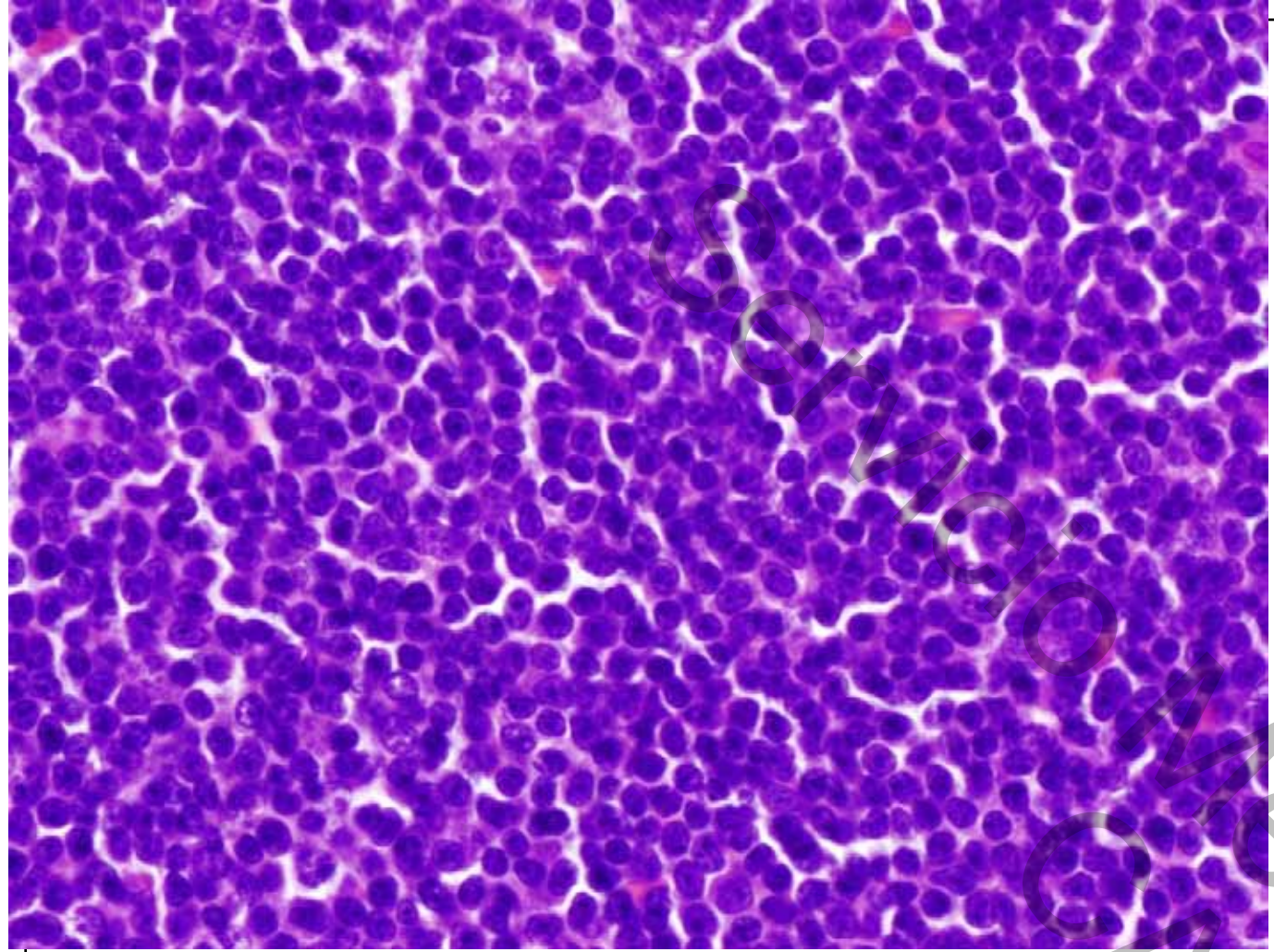
**Anatomía Patológica**

# Muestras Anatomía Patológica

- **PAAF tiroidea**
- **PAAF nódulo cervical**
- **Biopsia nódulo cervical**





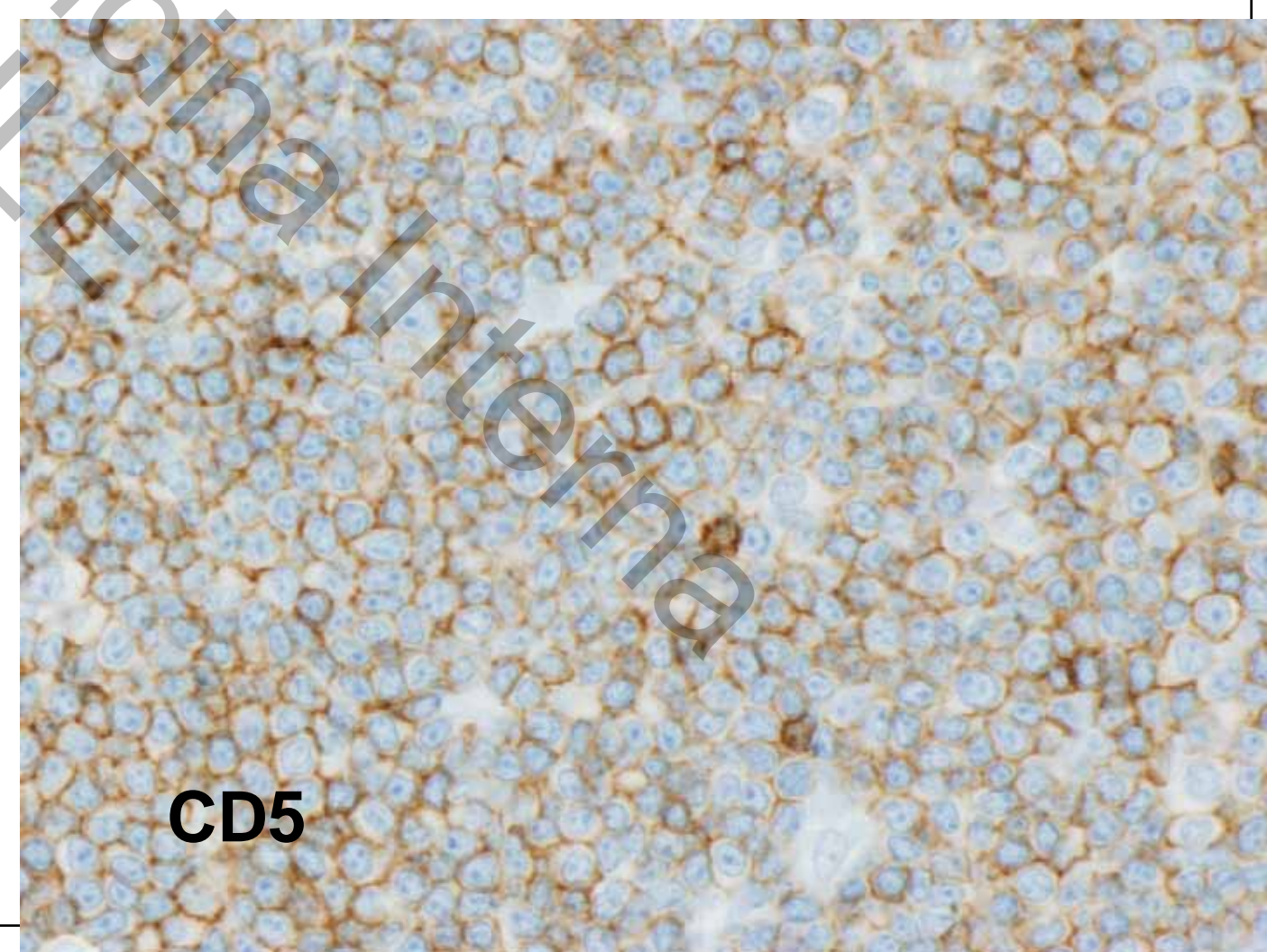
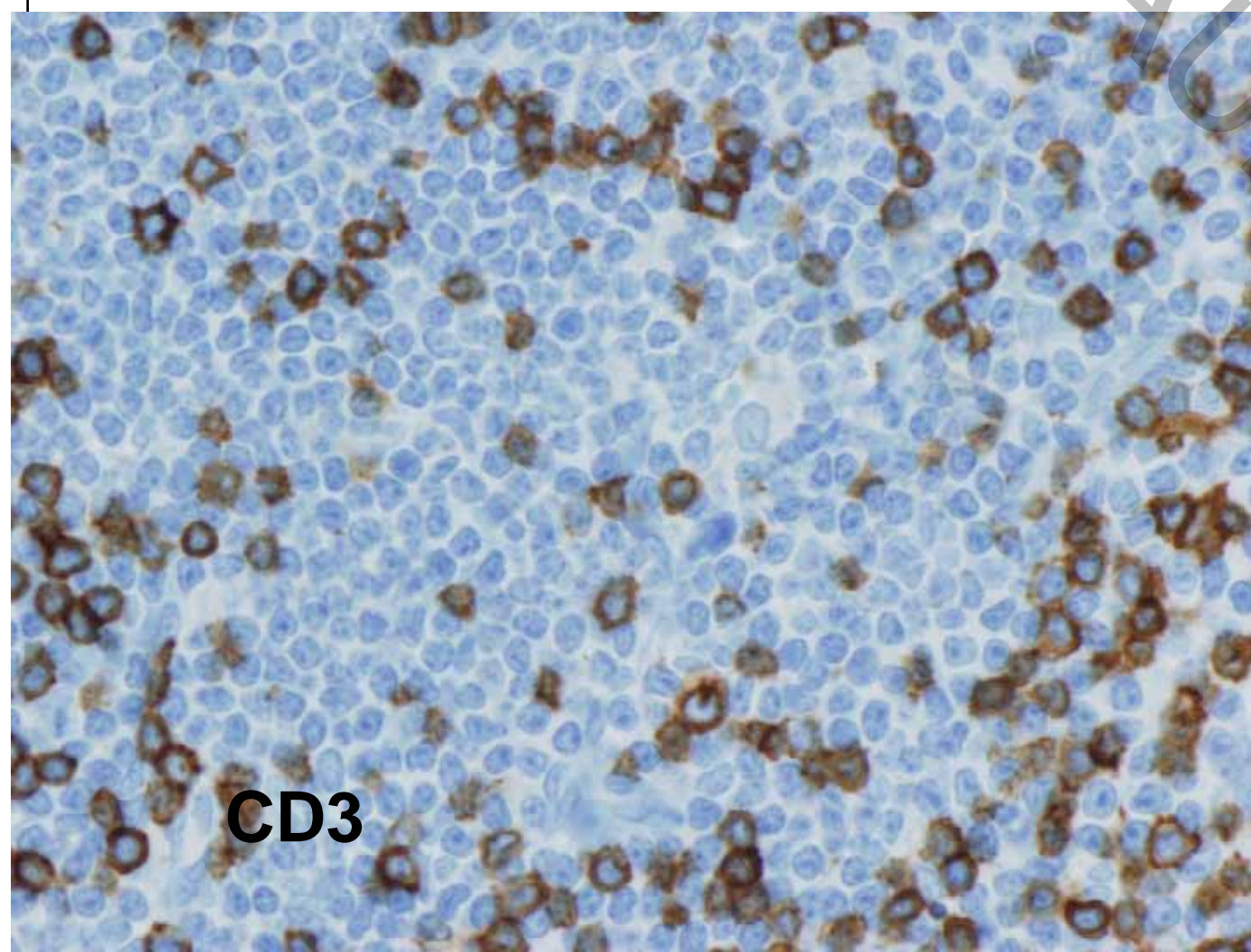
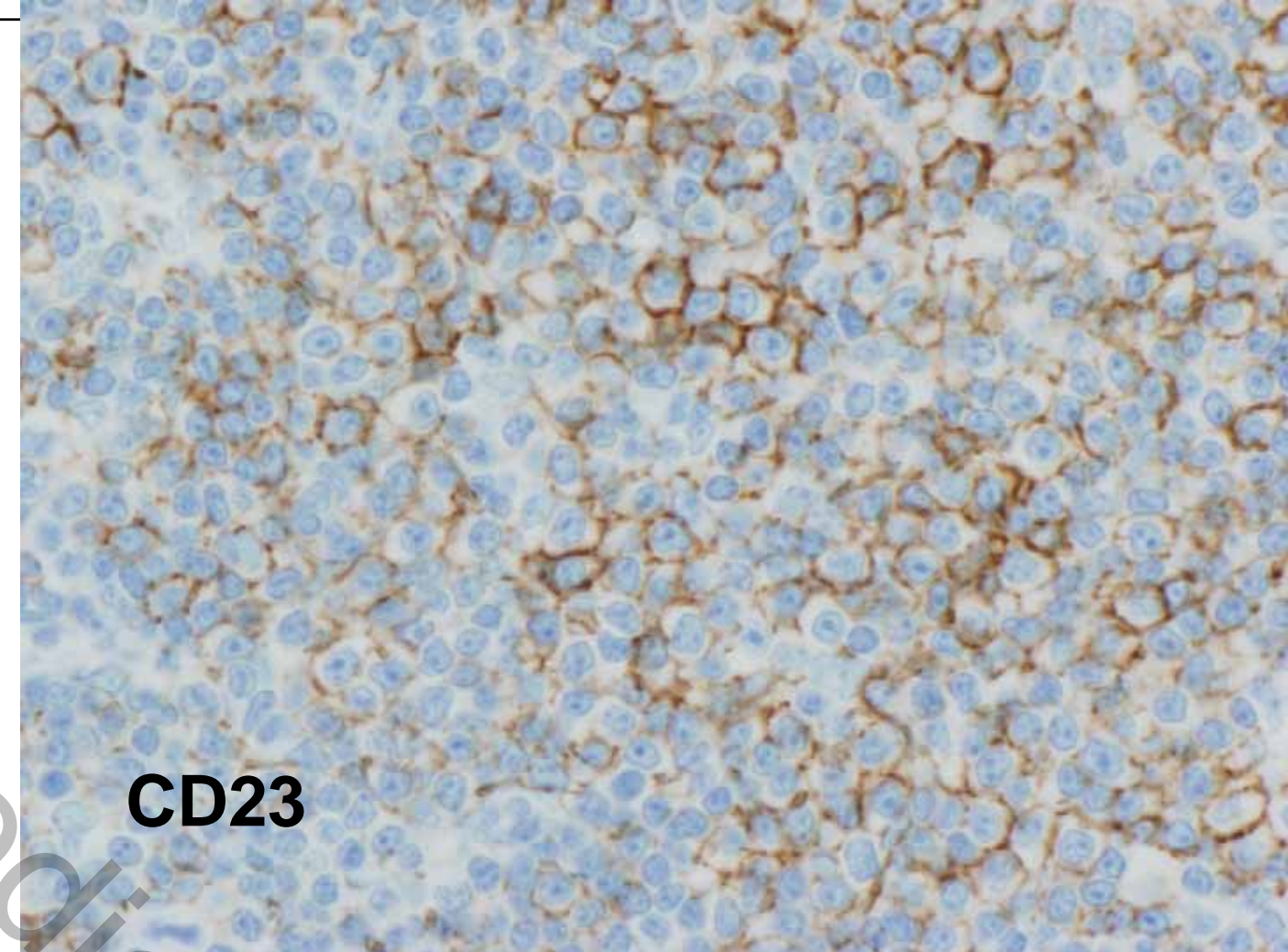
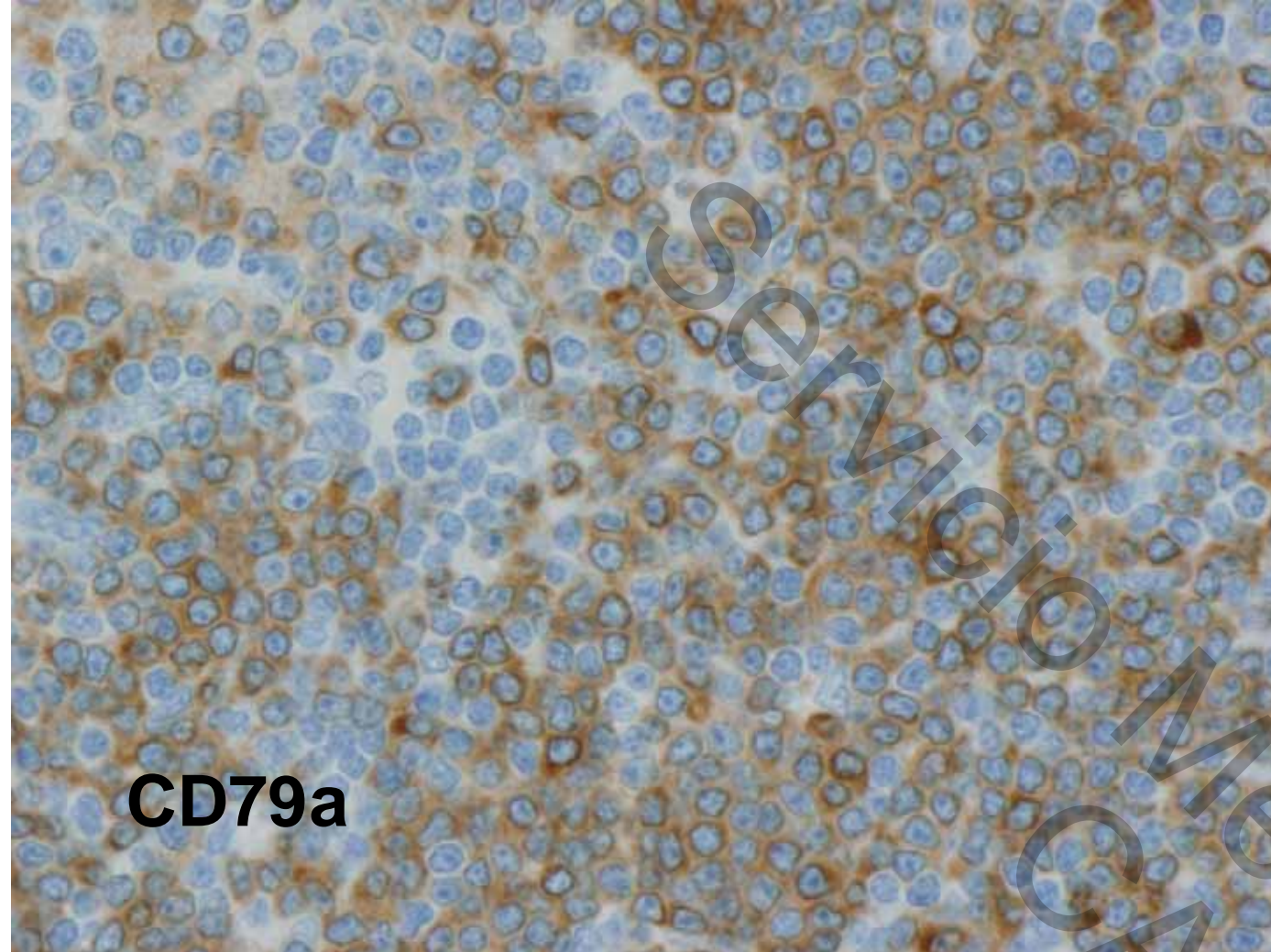




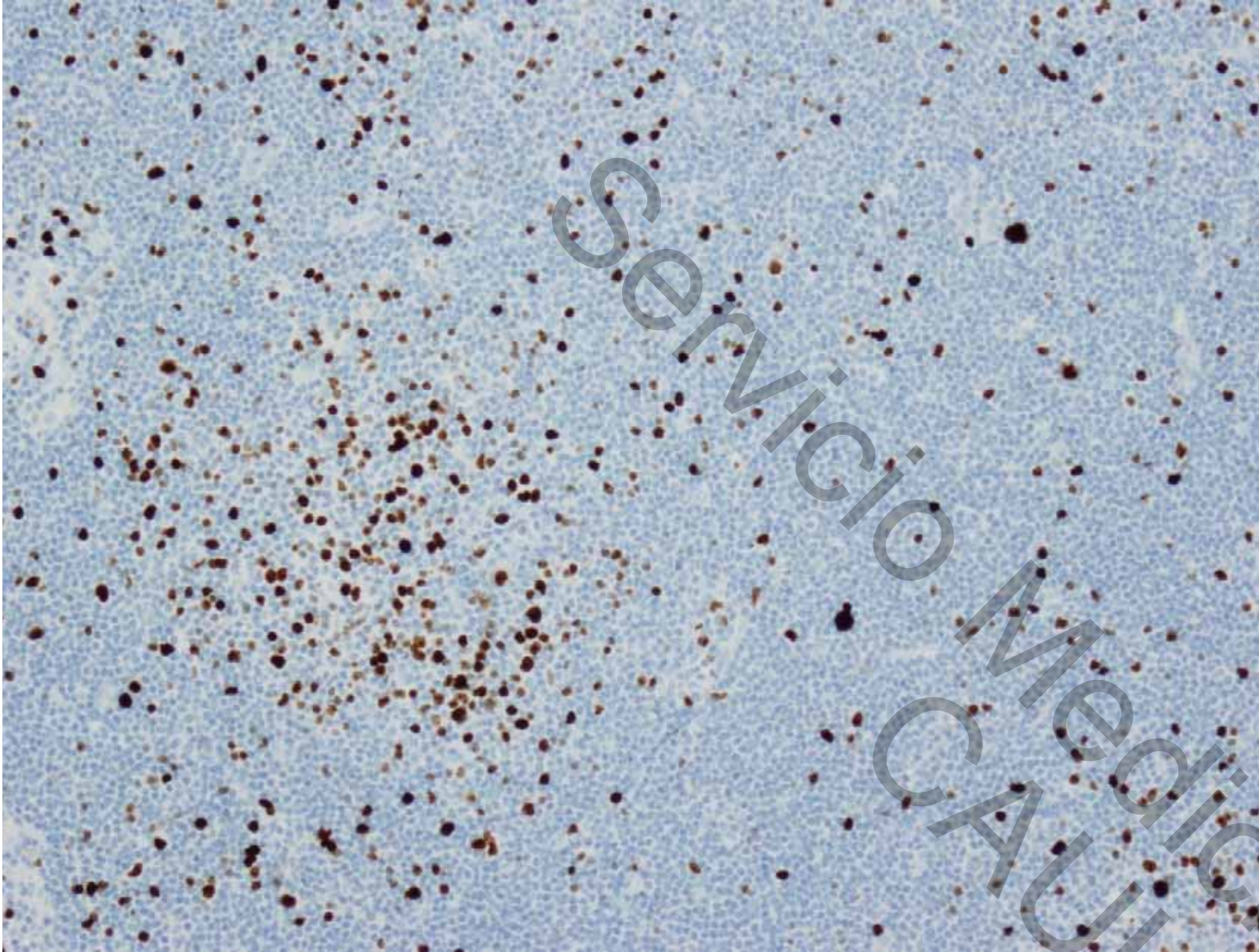
## Linfoma B de célula pequeña (bajo grado)

	<b>CD20</b>	<b>CD79a</b>	<b>CD3</b>	<b>CD5</b>	<b>CD10</b>	<b>CD23</b>	<b>BCL6</b>	<b>ciclinaD1</b>
<b>LLC-linf linfocítico cel pequeña</b>	+	+	-	+	-	+	-	-
<b>linf folicular</b>	+	+	-	-	+	-	+	-
<b>linf manto</b>	+	+	-	+	-	-	-	+
<b>linf linfoplasmocítico</b>	+	+	-	-	-	-	-	-
<b>linf marginal</b>	+	+	-	-	-	-	-	-

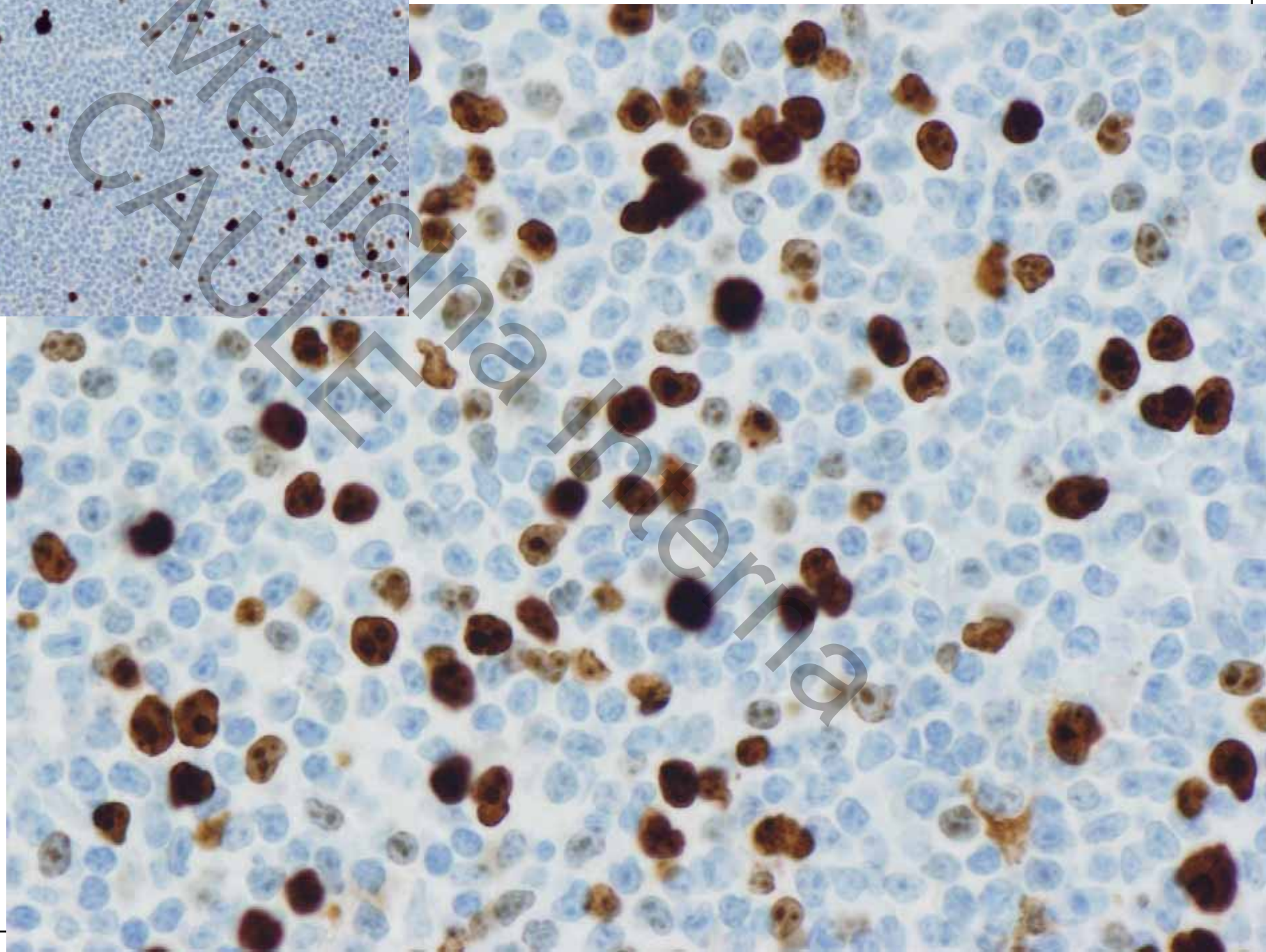








**Ki67**





## Linfoma B de célula pequeña (bajo grado)

	CD20	CD79a	CD3	CD5	CD10	CD23	BCL6	ciclinaD1
<b>LLC-linf linfocítico cel pequeña</b>	+	+	-	+	-	+	-	-
<b>linf folicular</b>	+	+	-	-	+	-	+	-
<b>linf manto</b>	+	+	-	+	-	-	-	+
<b>linf linfoplasmocítico</b>	+	+	-	-	-	-	-	-
<b>linf marginal</b>	+	+	-	-	-	-	-	-

**PAAF:**



Agrandamiento tiroideo+gánglio cervical

- **Carcinoma en el seno de bocio (papilar)**
- **Linfoma:**
  - **B difuso célula grande**
  - **Marginal (MALT)**
  - **Hashimoto**

**Entidades independientes**